

Use this nail board to trace the spinal reflex arc as well as the following four spinal tracts:

**Motor tracts**

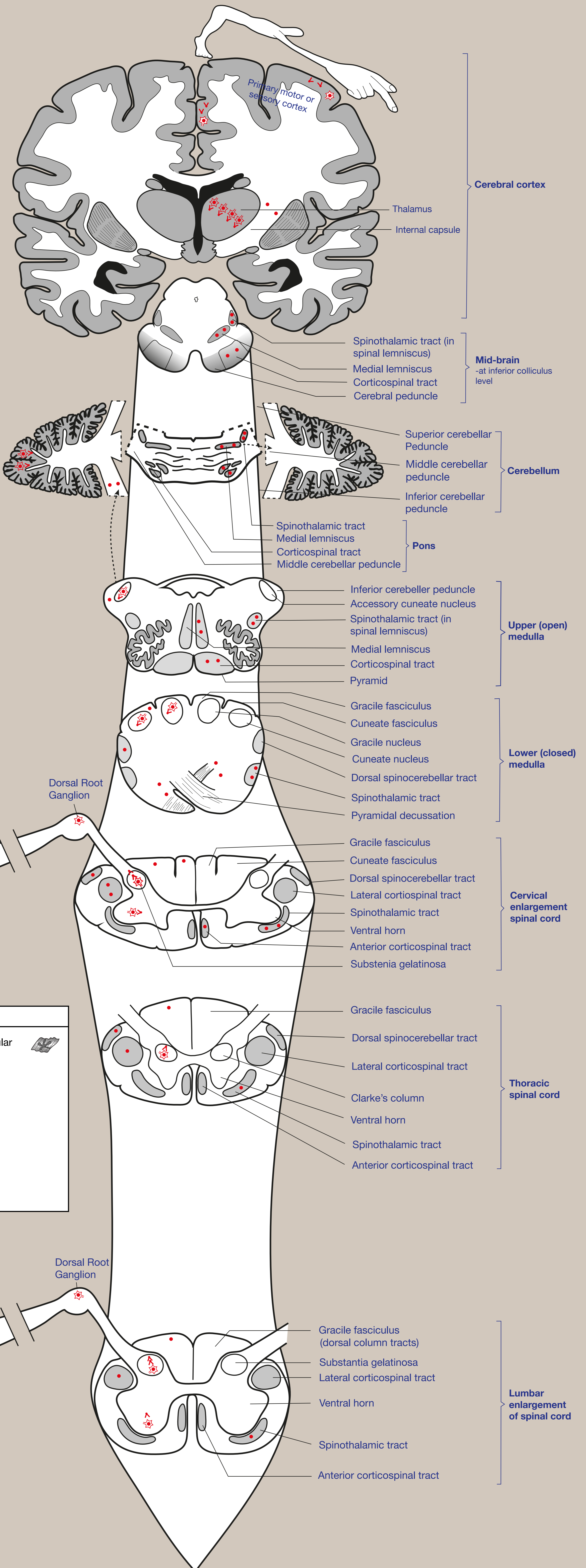
- Corticospinal tract (aka pyramidal tract)

**Sensory tracts**

- Dorsal column tract
- Spinothalamic tract
- Spinocerebellar tract

Large-headed nails represent neuronal cell bodies. Small-headed nails can be used as way points or can represent the termination of an axon or dendrite.

Please note that the positions of nuclei, tracts, and specific areas within them is a rough guide only.



Receptors	Effectors
Muscle spindle or golgi tendon organ (proprioception)	Neuromuscular junction
Free nerve endings, (pain, temperature)	
Meissner's and Pacinian corpuscles (skin sensation)	