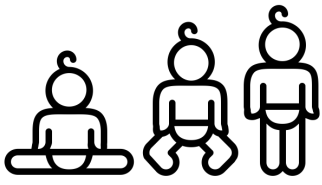


# EDUCATIONAL PSYCHOLOGY

Application to teaching and learning



Created by priyanka from Noun Project

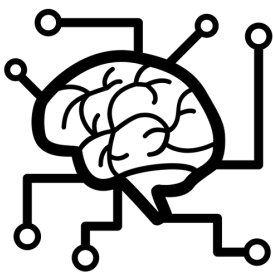


Created by Kyle Louis Fletcher from Noun Project

## DEVELOPMENTAL PSYCHOLOGY

### What changes, when & how?

As the brain and body mature, teaching should adjust to maximize children's learning.



Created by H Alberto Gongora from Noun Project

## COGNITIVE PSYCHOLOGY

### What is learning, memory, knowledge, and skill?

Best practices in teaching and learning should reflect what's known about how learning occurs at the neurological and behavioral levels.

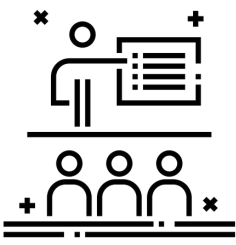


Created by Hadley Anderson from Noun Project

## SOCIAL - EMOTIONAL PSYCHOLOGY

### How does the learning situation relate to identity and motivation?

Sociability, identity, and motivation interact. When teachers know how social dynamics influence motivational processes, they can maximize learning opportunities.

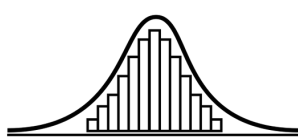
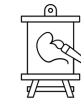


Created by Pravin Unagar from Noun Project

## INFLUENCE OF SETTINGS ON LEARNING

### How does motivation and learning vary across different settings?

And does elective learning enhance traditional academic achievement?



Created by Annette Spithoven from Noun Project

## INDIVIDUAL DIFFERENCES IN LEARNING

### How do learners differ from each other?

Teachers are called upon to differentiate instruction to give all learners equitable access.

In PSY 355

You will learn a little bit about all of this

For more about Educational Psychology, visit <https://apadiv15.org/>