

Solfège and Scale Degree Identification in a Melodic Context

Name: _____



[Playlist](#)

Directions: Identify each note below the excerpt with both a solfège and scale degree in the key provided. Note the changes in key, clef, and mode.

PART 1:

Measures 151–154 of the Horn I part in Mozart’s *Serenade in E-flat Major* (K. 375) (1781); Spotify Playlist #1 (4:53–5:00). The key is C major:



Scale Degree: _____

Solfège: _____

PART 2:

Measures 5–9 of the clarinet part in the final movement of Samuel Coleridge-Taylor’s *Clarinet Quintet in A* (1895); Spotify Playlist #2 (0:04–0:10). The key is A minor:



Scale Degree: _____

Solfège: _____

Solfège and Scale Degree Identification in a Melodic Context

PART 3:

Measures 28–31 of Nadia Boulanger’s *Three Pieces for Violoncello and Piano No. 2*, Movement 2 (1914); Spotify Playlist #3 (1:25–1:43). The key is A minor:

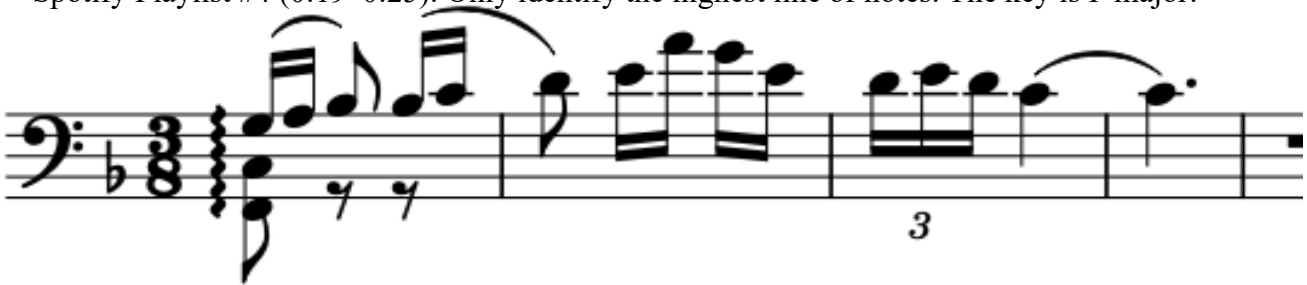


Scale Degree: _____

Solfège: _____

PART 4:

Measures 9–12 of the bass part in Isaac Albéniz’s *Suite Espagnole, No. 1 Granada* (c. 1886); Spotify Playlist #4 (0:19–0:25). Only identify the highest line of notes. The key is F major:



Scale Degree: _____

Solfège: _____